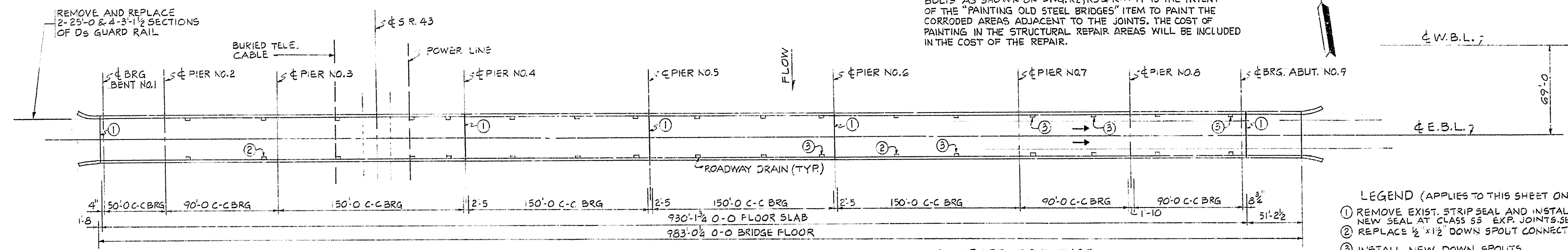


REPOINTING MASONRY IN STR'S
ESTIMATED QUANTITIES
PIER #2 = 68 SFT.
PIER #3 = 100 SFT.
PIER #4 = 40 SFT.
PIER #5 = 50 SFT.
PIER #6 = 70 SFT.
PIER #7 = 200 SFT.
PIER #8 = 110 SFT.
TOTAL = 646 SFT.

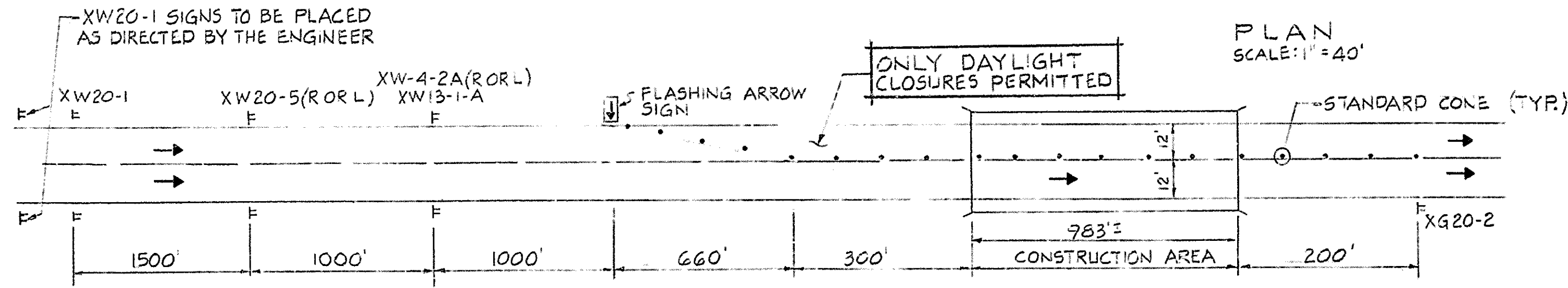
ELEVATION
SCALE: 1" = 40'

NOTE:
THE PURPOSE FOR REHABILITATING THIS STRUCTURE IS TO ELIMINATE FURTHER DETERIORATION OF BADLY RUSTED STRINGER AND BRACKET CONNECTIONS, TO REMOVE BADLY RUSTED STRINGER EXTENSIONS, REPLACE BOTTOM FLANGE BRACKET ANGLES AND DAMAGED STRUTS OF SWAY FRAMES AND ANCHOR BOLTS AS SHOWN ON DWG. R2, R3 & R4. IT IS THE INTENT OF THE "PAINTING OLD STEEL BRIDGES" ITEM TO PAINT THE CORRODED AREAS ADJACENT TO THE JOINTS. THE COST OF PAINTING IN THE STRUCTURAL REPAIR AREAS WILL BE INCLUDED IN THE COST OF THE REPAIR.

UTILITY OWNERS
TELEPHONE:
GENERAL TELEPHONE CO. OF IND., INC.
800 U.S. 24 WEST
POST OFFICE BOX 1201
FORT WAYNE, IN. 46801
POWER:
PUBLIC SERVICE OF INDIANA
100 EAST MAIN ST.
PLAINFIELD IN. 46168

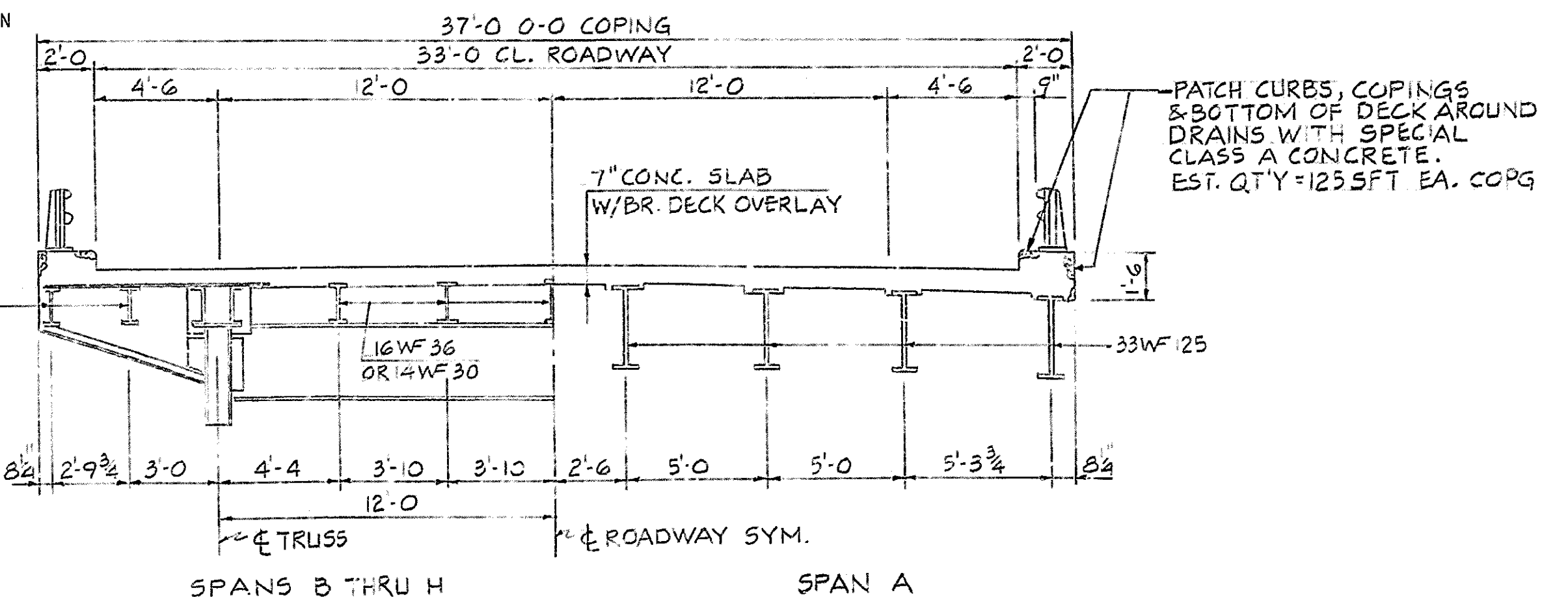


LEGEND (APPLIES TO THIS SHEET ONLY)
① REMOVE EXIST. STRIP SEAL AND INSTALL NEW SEAL AT CLASS 55 EXP. JOINTS. SEE DWG. R4.
② REPLACE 1/2" x 1 1/2" DOWN SPOUT CONNECTION BOLTS.
③ INSTALL NEW DOWN SPOUTS.



XW20-1 ROAD CONSTRUCTION AHEAD
XW20-5 LANE CLOSED AHEAD
XW4-2A LANE ENDS
XW13-1-A ADVISORY SPEED SIGN
XG20-2 END CONSTRUCTION

TRAFFIC MAINTENANCE PHASE I
PHASE II SAME BY OPPOSITE HAND



TYPICAL SECTION
SCALE: 1/2" = 1'-0"

STANDARD DRAWINGS
RD. STD.
GR2 CLASS DS GUARD RAIL
SHT. 1, 2A, 3, 4, 5 STD. DETOUR SIGNS

GENERAL NOTES
PLANS FOR EXISTING STRUCTURE ARE ON FILE IN THE BRIDGE DEPARTMENT AT THE INDIANA DEPARTMENT OF HIGHWAYS, CENTRAL OFFICE, AS BRIDGE FILE 52-79-1784 AND ARE AVAILABLE UPON REQUEST.
WHERE NEW WORK IS TO BE FITTED TO OLD WORK, THE CONTRACTOR SHALL CHECK ALL DIMENSIONS AND CONDITIONS IN THE FIELD AND REPORT ANY ERRORS OR DISCREPANCIES TO THE ENGINEER AND ASSUME RESPONSIBILITY FOR THEIR CORRECTNESS AND THE FIT OF THE NEW PART TO OLD.
CONCRETE FOR PATCHES IN DETERIORATED CURB AND COPING AREAS SHALL BE SPECIAL CLASS "A" CONCRETE.
THE HAND CHIPPING AND CLEANING OF DETERIORATED CURB AND COPING AREAS SHALL BE AS DIRECTED BY THE ENGINEER. IT IS THE INTENT OF THESE PLANS THAT ALL SUCH DETERIORATED CONCRETE BE REMOVED, AND SHOULD THERE BE ANY DOUBT AS TO THE QUALITY OF THE CONCRETE, REMOVAL SHALL CONTINUE UNTIL PERFECTLY SOUND CONCRETE IS EXPOSED.
FOR CONCRETE REMOVAL EQUIPMENT, SEE ARTICLE 202.03(b) OF THE STANDARD SPECIFICATIONS.
SEE THE SPECIAL PROVISIONS FOR STRUCTURAL STEEL ENVIRONMENTAL CLEANING RESTRICTIONS.
WORK STARTED IN THE MORNING WHICH AFFECTS THE STRUCTURAL INTEGRITY OF THE STRUCTURE SHALL BE COMPLETED THE SAME DAY. DISCONNECTED FLOOR STRINGERS SHALL BE CONTINUOUSLY SUPPORTED UNTIL RECONNECTED TO FLOOR BEAMS OR BRACKETS.

CONSTRUCTION PROCEDURE

INSTALL TRAFFIC CONTROL DEVICES AS SHOWN ON THIS DRAWING, OR AS DIRECTED BY THE ENGINEER.
CONSTRUCT ALL WORK AS SHOWN ON DETAIL DRAWINGS.
ONE LANE OF TRAFFIC IS TO BE MAINTAINED THROUGHOUT THE CONSTRUCTION PERIOD.

SUMMARY OF QUANTITIES

CODE	DESCRIPTION	QUANTITY	UNITS
06710	REPAIR STRINGER CONNECTION AT BRACKET	1	EACH
61000	FLASHING ARROW SIGN	1	DAY.
61875	CLEANING (OLD STEEL BRIDGE)	1	LSUM.
75529	SPECIAL CLASS A CONCRETE	250	SFT.
51859	EXPANSION JOINT SS REPLACEMENT SEAL	195	LFT.
51112	PAINTING (OLD STEEL BRIDGE)	1	LSUM.
51106	ANCHOR BOLTS	18	EACH.
51870	EXTENSION CAST IRON DRAINS	5	EACH.
02241	REPOINTING MASONRY IN STRUCTURES	646	SFT.
06015	REMOVAL OF GUARD RAIL	62.5	LFT.
51038	GUARD RAIL TYPE D	62.5	LFT.
06775	STRUCTURAL STEEL	1	LSUM.
01001	MAINTAINING TRAFFIC	1	LSUM.
51866	MOBILIZATION AND DEMOBILIZATION	1	LSUM.
51863	RIVETS REMOVED	458	EACH.
06640	FIELD DRILLED HOLES IN CONCRETE	18	EACH.
06645	CONSTRUCTION SIGN, TYPE A	10	EACH.
61001	CONSTRUCTION SIGN, TYPE B	2	EACH.
	POLLUTION CONTROL (OLD STEEL BRIDGE)	1	LSUM.

REMOVAL OF STRUCTURAL STEEL - COST TO BE INCLUDED IN COST OF STRUCTURAL STEEL.
COST OF STANDARD CONES SHALL BE INCLUDED IN THE COST OF "MAINTAINING TRAFFIC" (LSUM).

GENERAL PLAN
SUPERSTRUCTURE REPAIRS - STEEL TRUSS BRIDGE
8 SPANS: 50'-0", 90'-0", 150'-0", 2@90'-0" 33'-0" CL. RDWY., 2@9" CURBS, SQUARE U.S. 52 BY-PASS OVER WABASH RIVER & S.R. 43
INDIANA DEPARTMENT OF HIGHWAYS
TIPPECANOE COUNTY

SCALE: AS NOTED DATE: JAN. 16, 1989

SUBMITTED FOR APPROVAL: Richard J. O'Connor

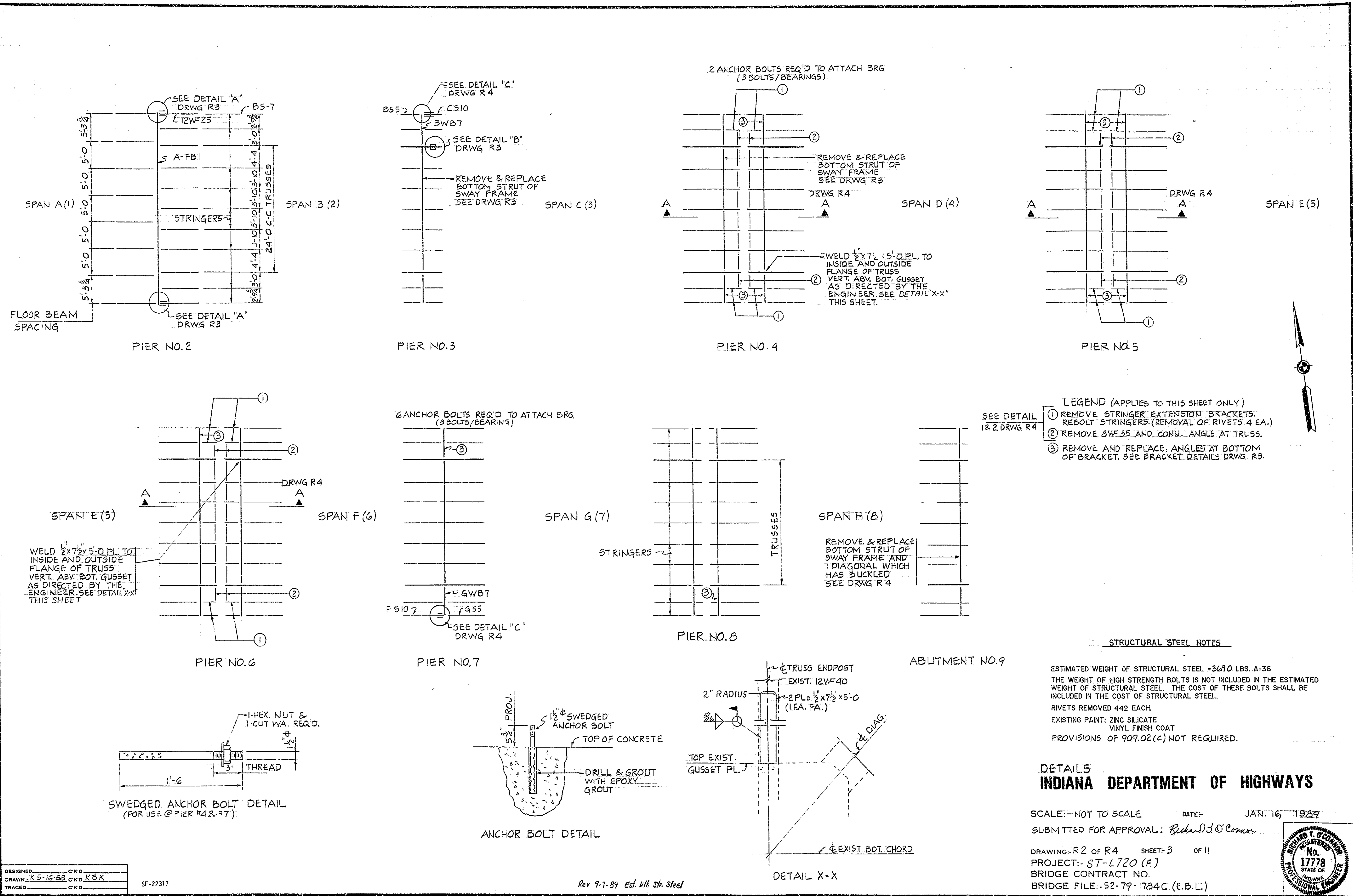
DRAWING: R1 OF R4 SHEET: 2 OF 11
PROJECT: ST-L720 (F)
BRIDGE CONTRACT NO.
BRIDGE FILE: 52-79-1784 C (E.B.L.)



DESIGNED: CKD
DRAWN: JK 5-11-88 CKD KES
TRACED: CKD

86007/2753

Rev. 10-6-89 Paint intent
Rev. 9-07-89; Summary of Quantities (Rivets Removed)



LEGEND (APPLIES TO THIS SHEET ONLY)

- ① REMOVE STRINGER EXTENSION BRACKETS. REBOLT STRINGERS. (REMOVAL OF RIVETS 4 EA.)
- ② REMOVE 8W35 AND CONN. ANGLE AT TRUSS.
- ③ REMOVE AND REPLACE ANGLES AT BOTTOM OF BRACKET. SEE BRACKET DETAILS DRWG. R3.

STRUCTURAL STEEL NOTES

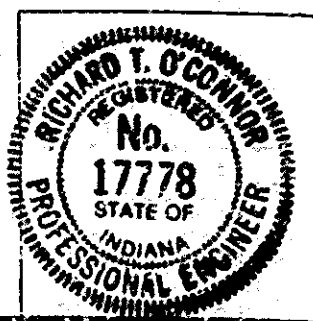
ESTIMATED WEIGHT OF STRUCTURAL STEEL = 3690 LBS. A-36
 THE WEIGHT OF HIGH STRENGTH BOLTS IS NOT INCLUDED IN THE ESTIMATED WEIGHT OF STRUCTURAL STEEL. THE COST OF THESE BOLTS SHALL BE INCLUDED IN THE COST OF STRUCTURAL STEEL.
 RIVETS REMOVED 442 EACH.
 EXISTING PAINT: ZINC SILICATE VINYL FINISH COAT
 PROVISIONS OF 909.02(C) NOT REQUIRED.

DETAILS INDIANA DEPARTMENT OF HIGHWAYS

SCALE: NOT TO SCALE DATE: JAN. 16, 1989

SUBMITTED FOR APPROVAL: Richard J. O'Connor

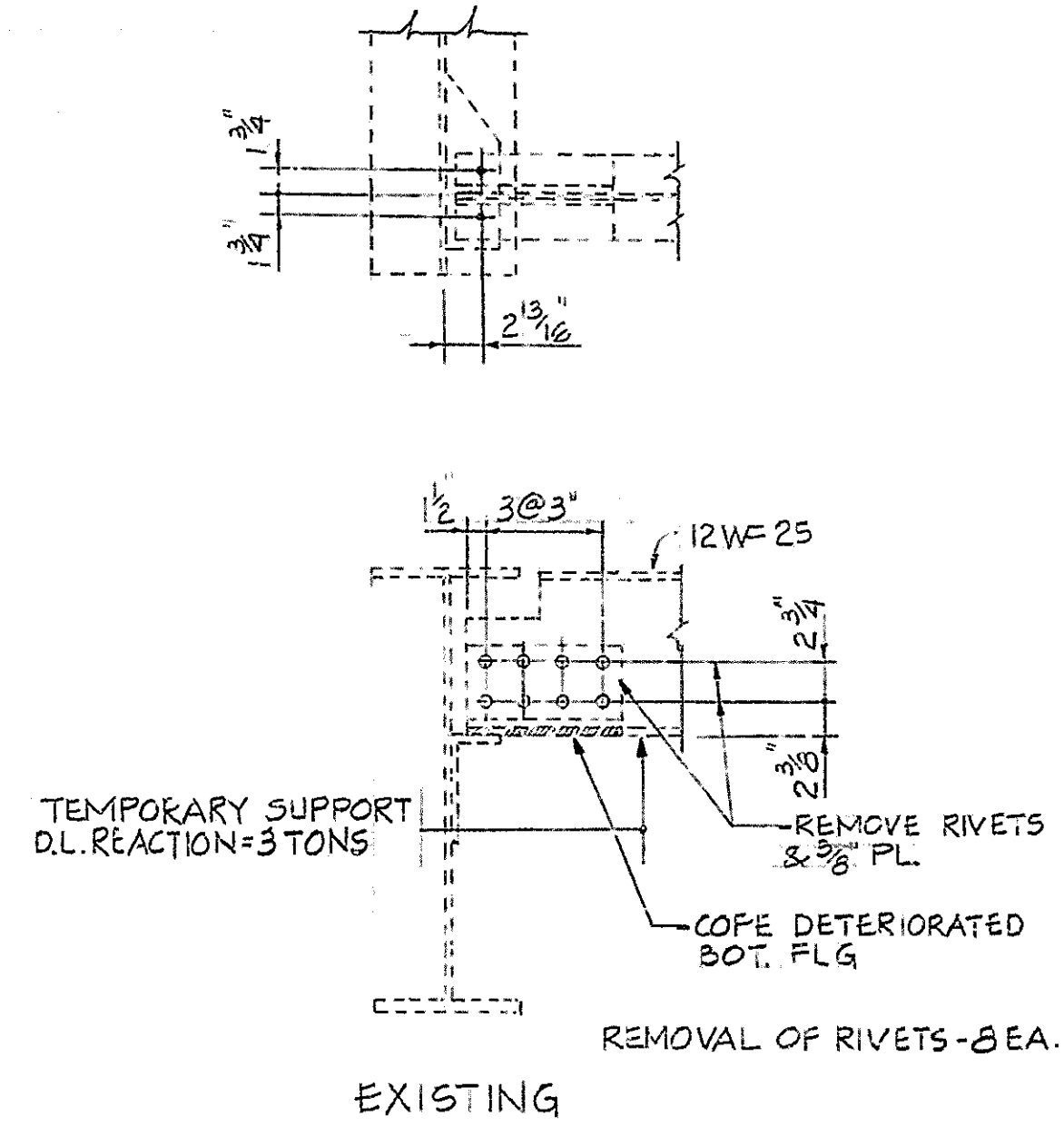
DRAWING: R2 OF R4 SHEET: 3 OF 11
 PROJECT: 87-L720 (F)
 BRIDGE CONTRACT NO.
 BRIDGE FILE: 52-79-1784C (E.B.L.)



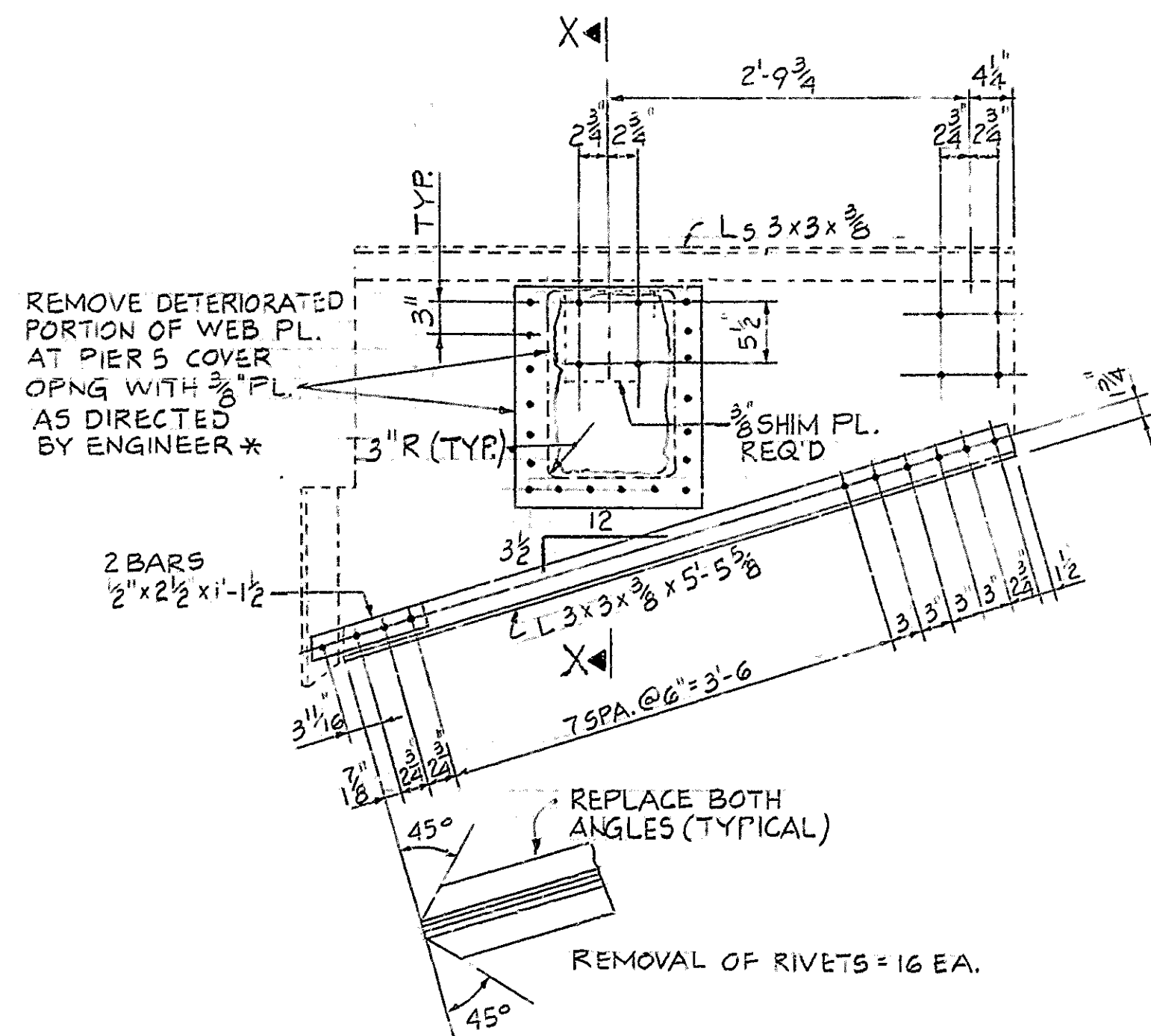
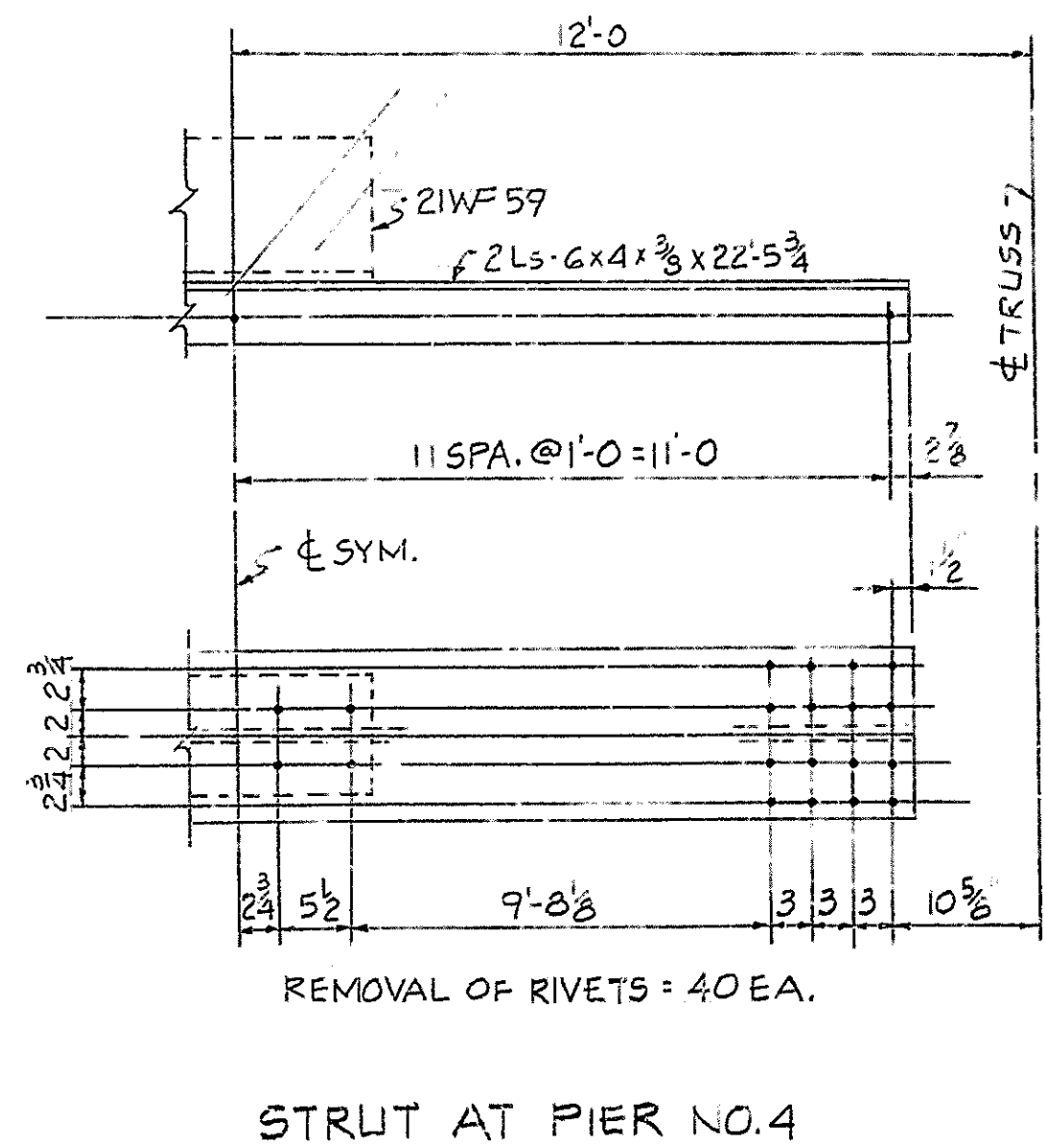
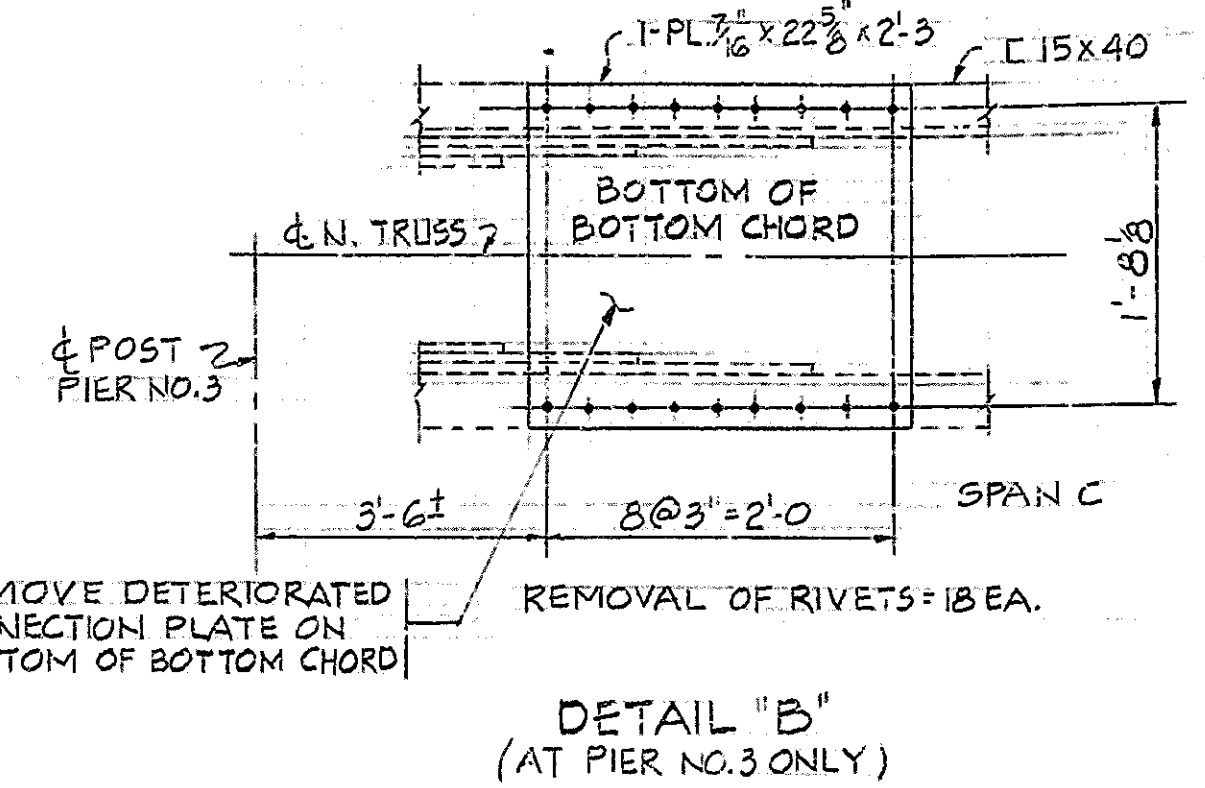
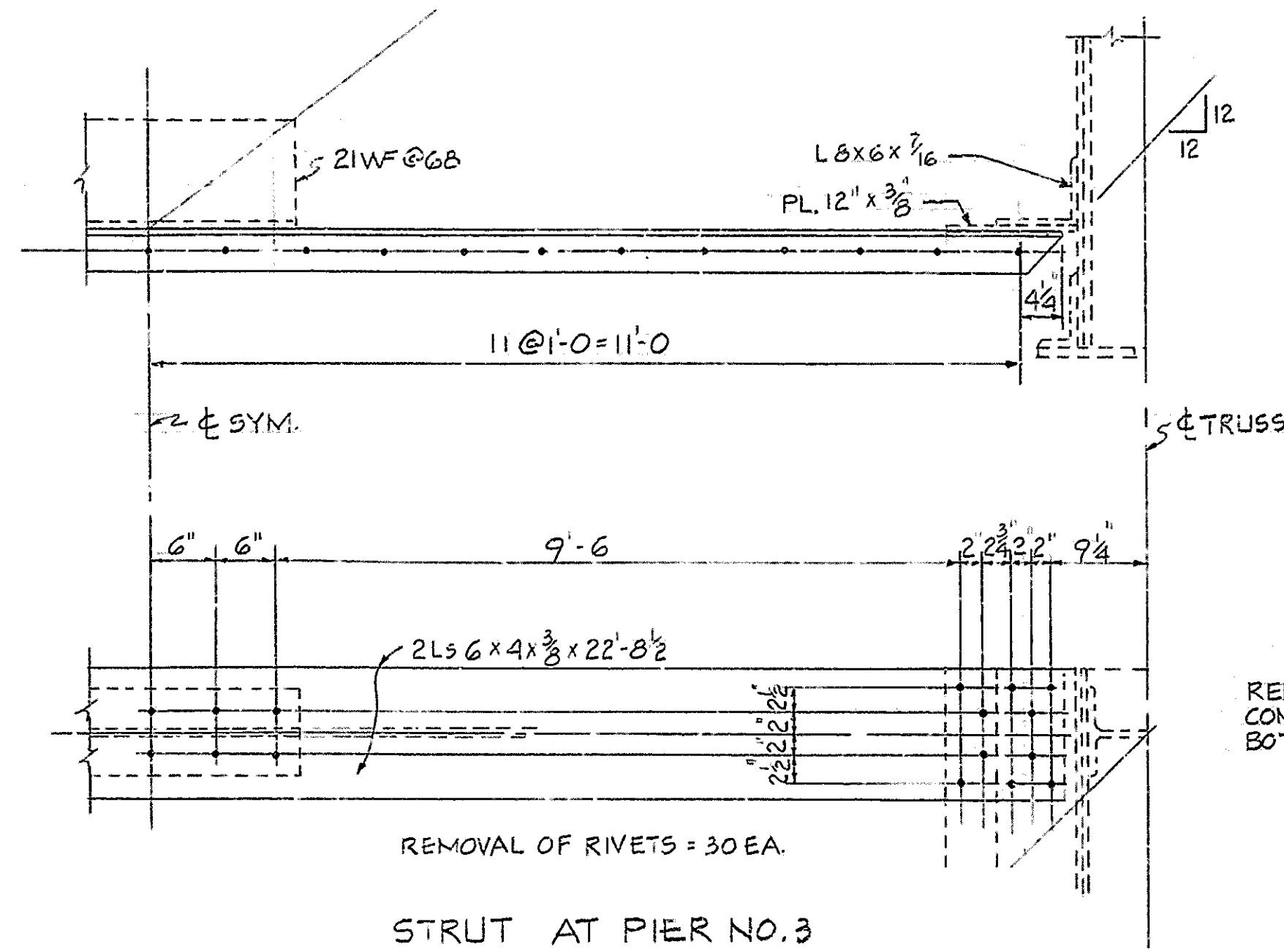
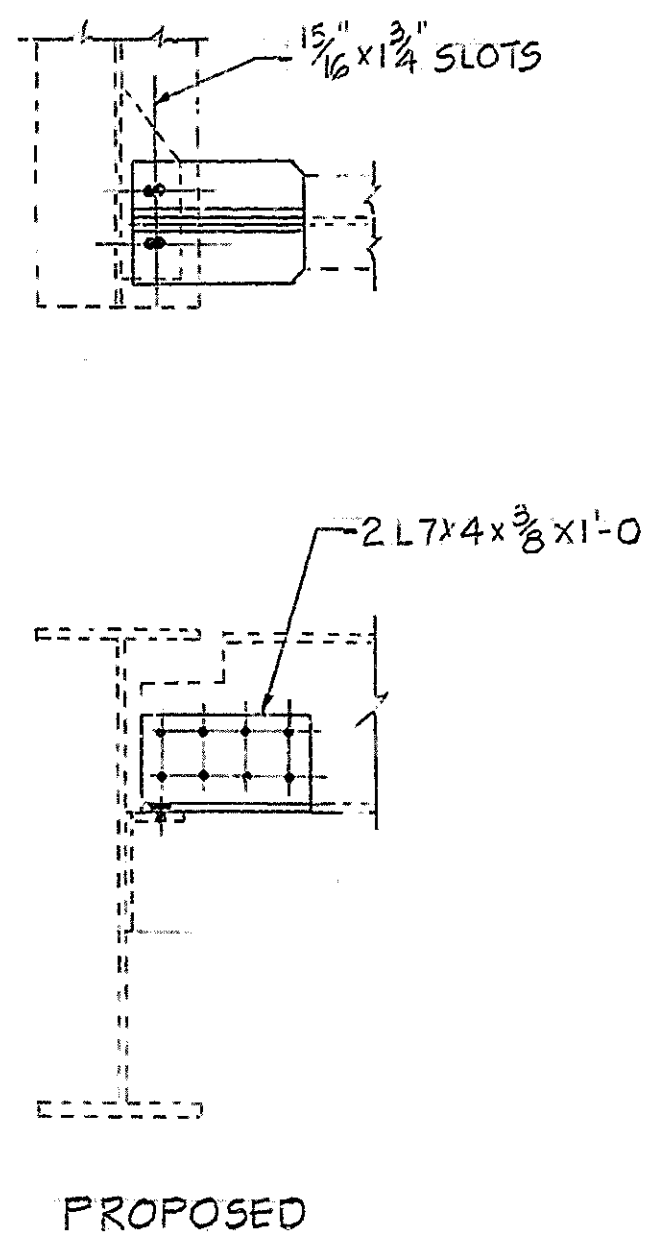
DESIGNED: C.K.D.
 DRAWN: K.B. 16-88 C.K.D. R.B.K.
 TRACED: C.K.D.

SF-22317

Rev 9-7-89 Est. Wt. Str. Steel

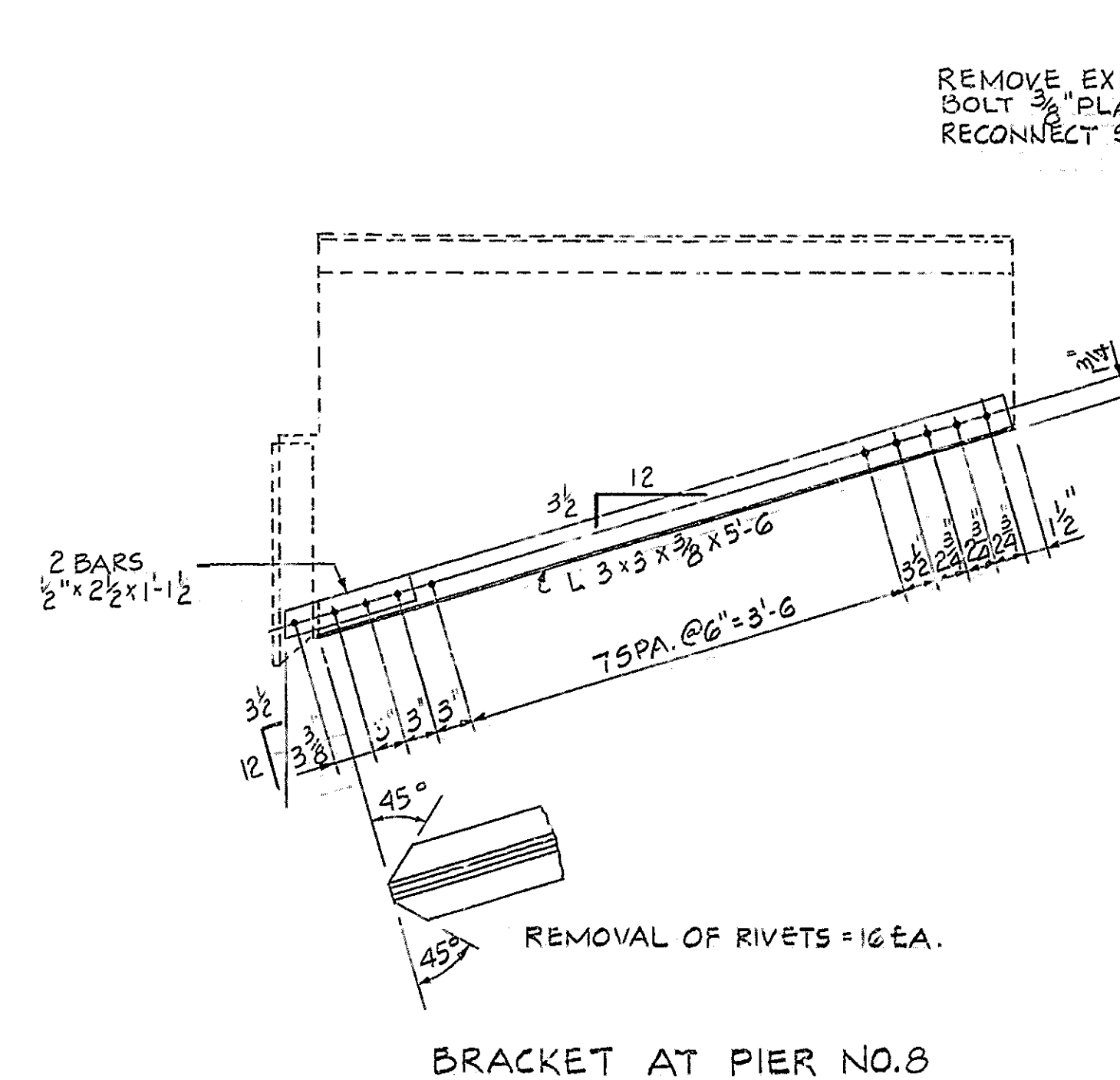


DETAIL A
(2 LOCATIONS AT PIER NO. 2)



BRACKET AT PIERS NO. 4, NO. 5, NO. 6 & NO. 7 (10 LOCATIONS TOTAL)

* PAY ITEM: (1 LOCATION)
"REPAIR STRINGER CONNECTION AT BRACKET (PIER 5 ONLY)
INCLUDES CUTTING, DRILLING HOLES, AND BOLTING.
REPAIR WEB PRIOR TO REPLACING THE ANGLES



DETAILS
INDIANA DEPARTMENT OF HIGHWAYS

SCALE: - NOT TO SCALE DATE: - JAN. 16, 1989

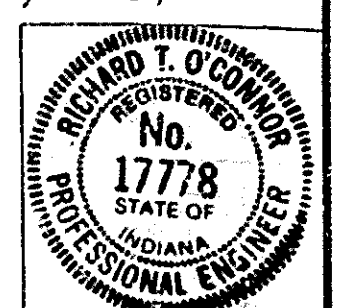
SUBMITTED FOR APPROVAL: Richard O'Connor

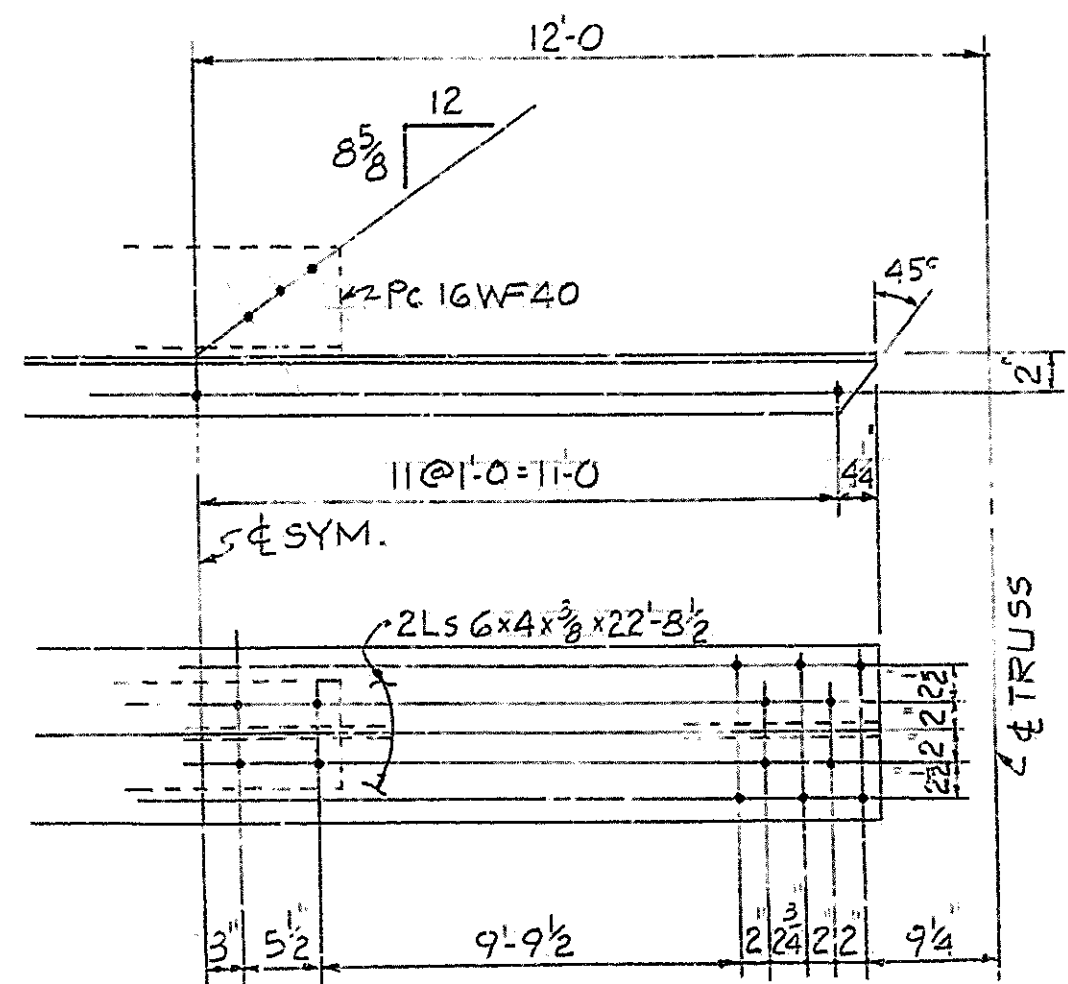
DRAWING: R3 OF R4 SHEET: 4 OF 11
PROJECT: SF-L780 (F)
BRIDGE CONTRACT NO.
BRIDGE FILE: 52-79-1784C (E.B.L.)

DESIGNED: C.K.D.
DRAWN: J.K.S. 10-88 C.K.D. L.B.K.
TRACED: C.K.D.

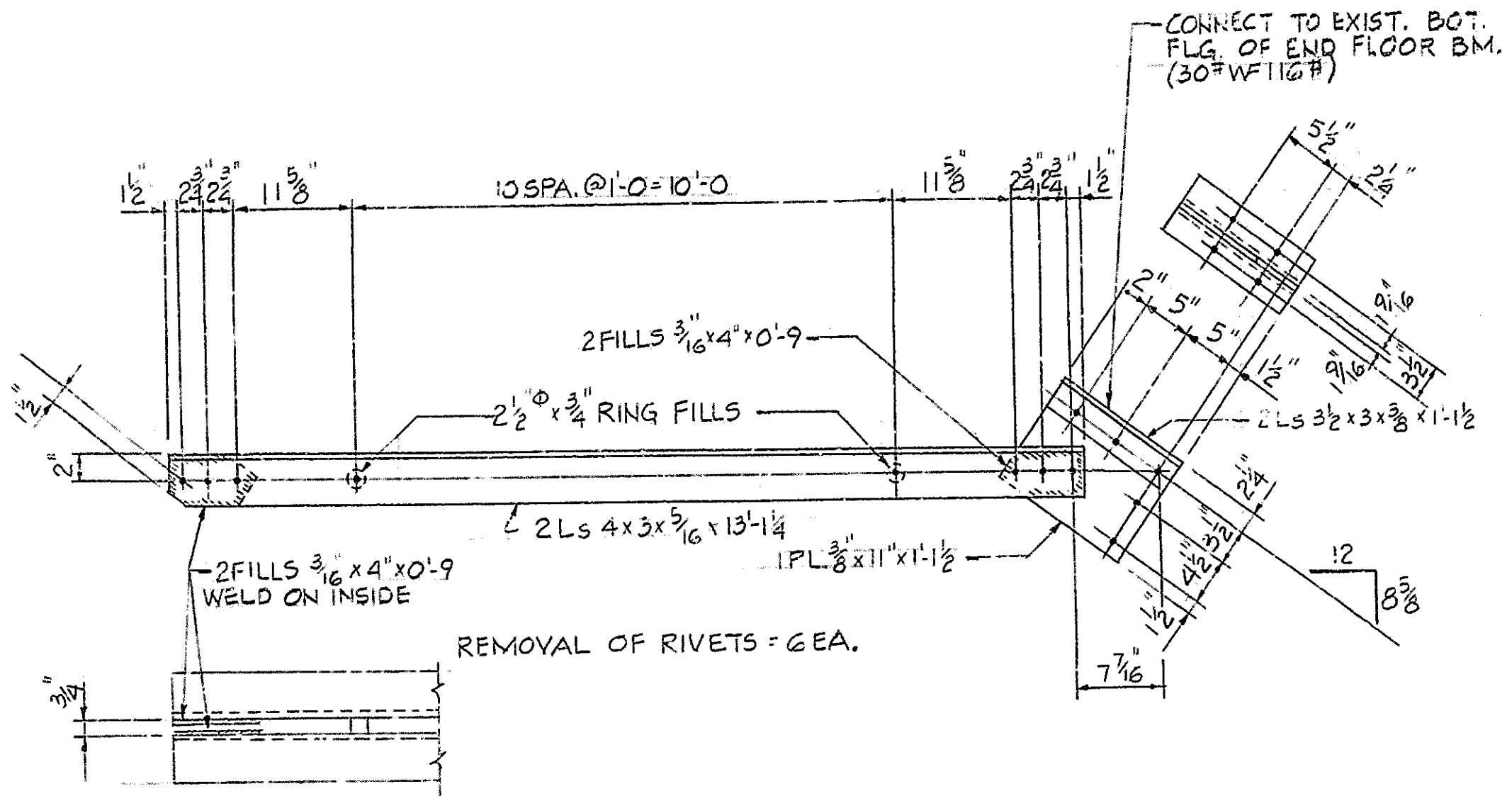
SF-22317

Rev. 9-07-89; Web Repair of Pier #5

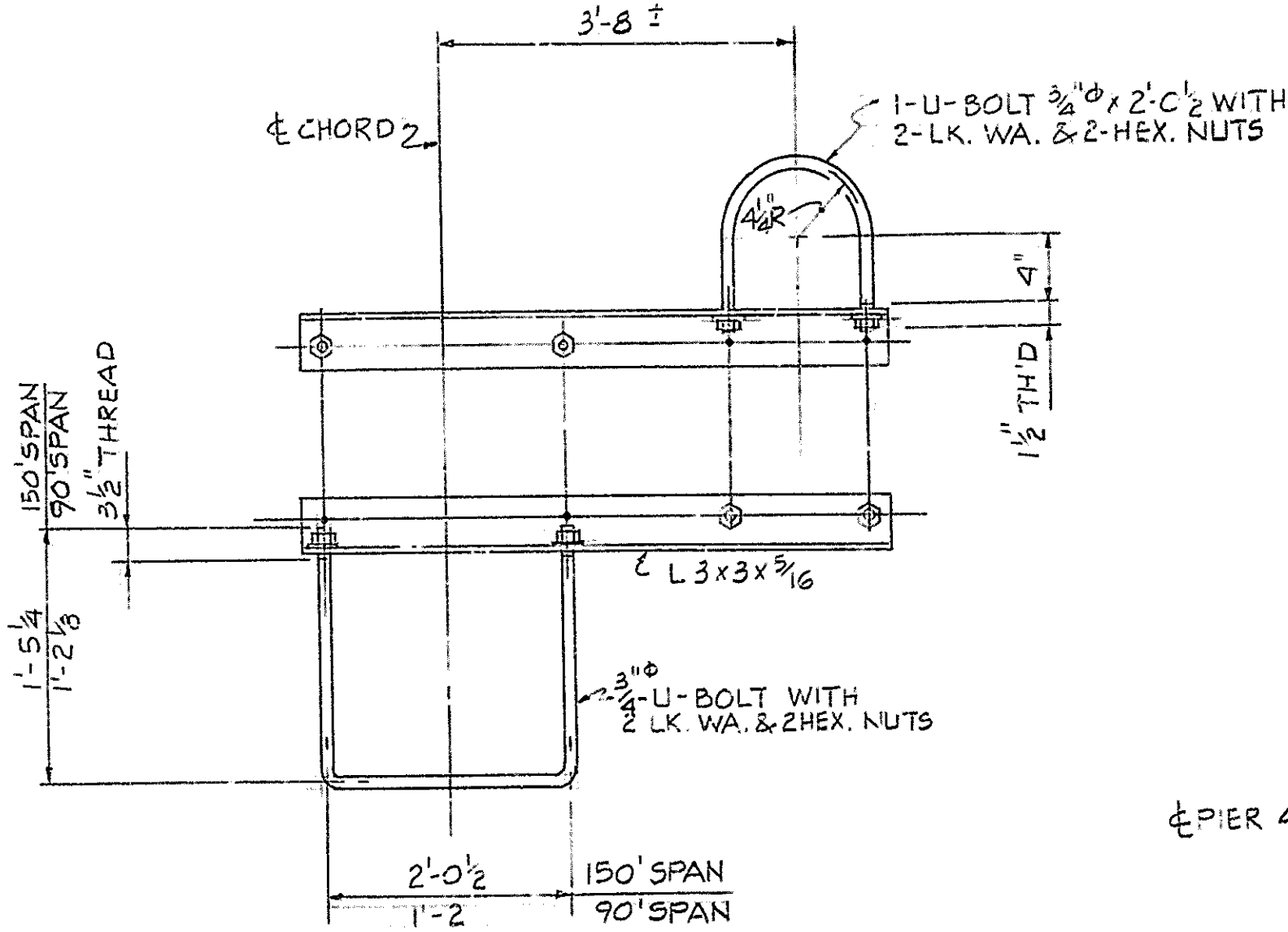




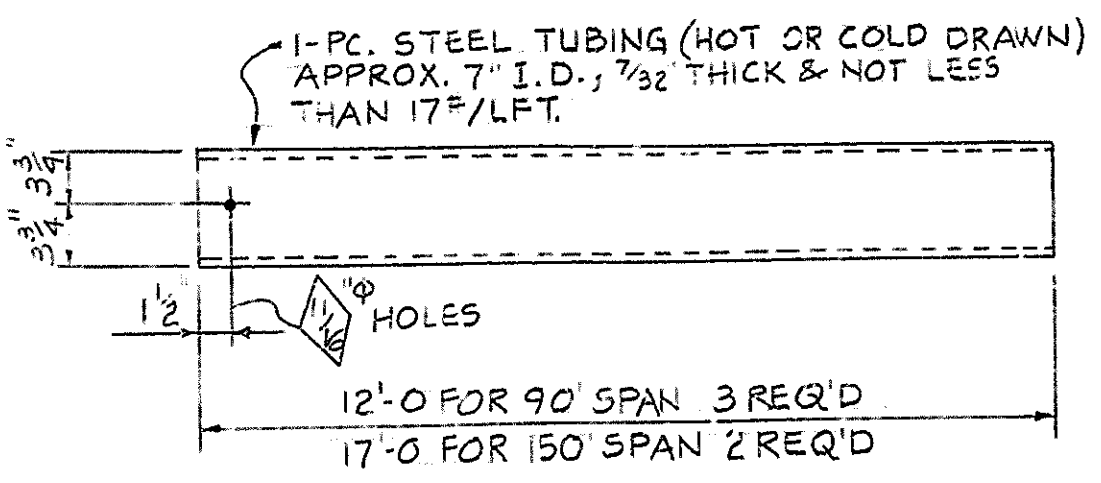
STRUT AT ABUTMENT NO. 9
REMOVAL OF RIVETS = 28 EA.



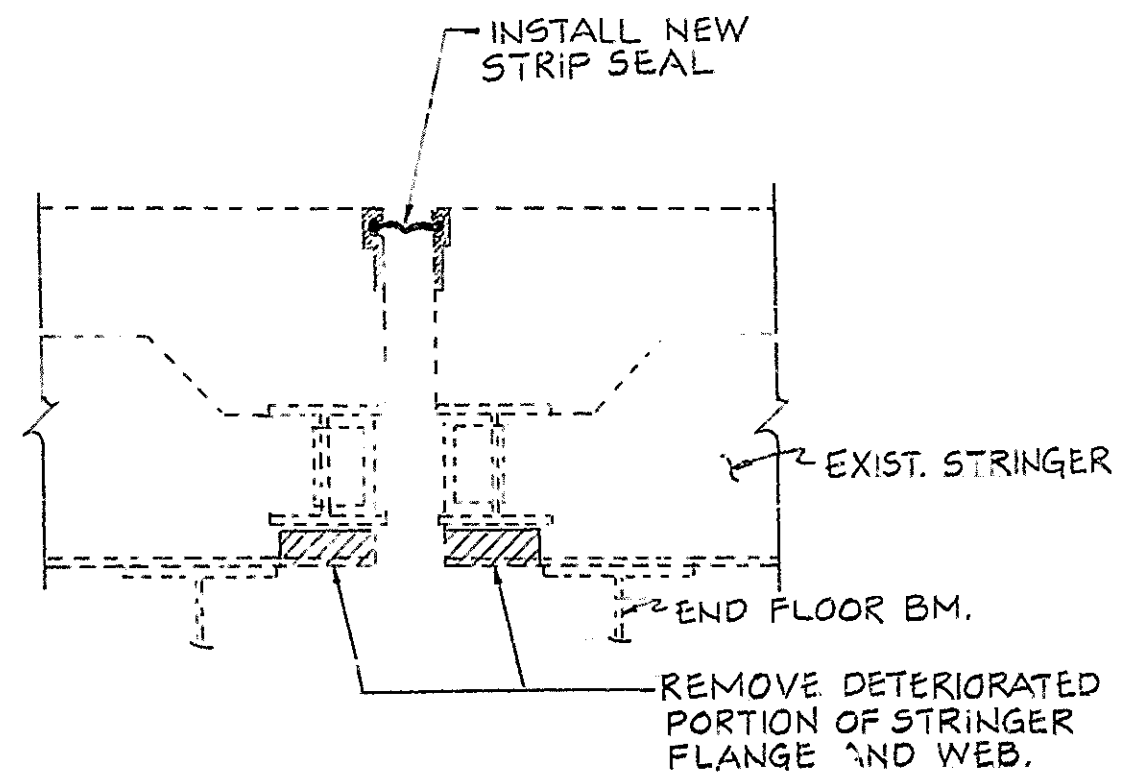
DIAGONAL AT ABUTMENT NO. 9



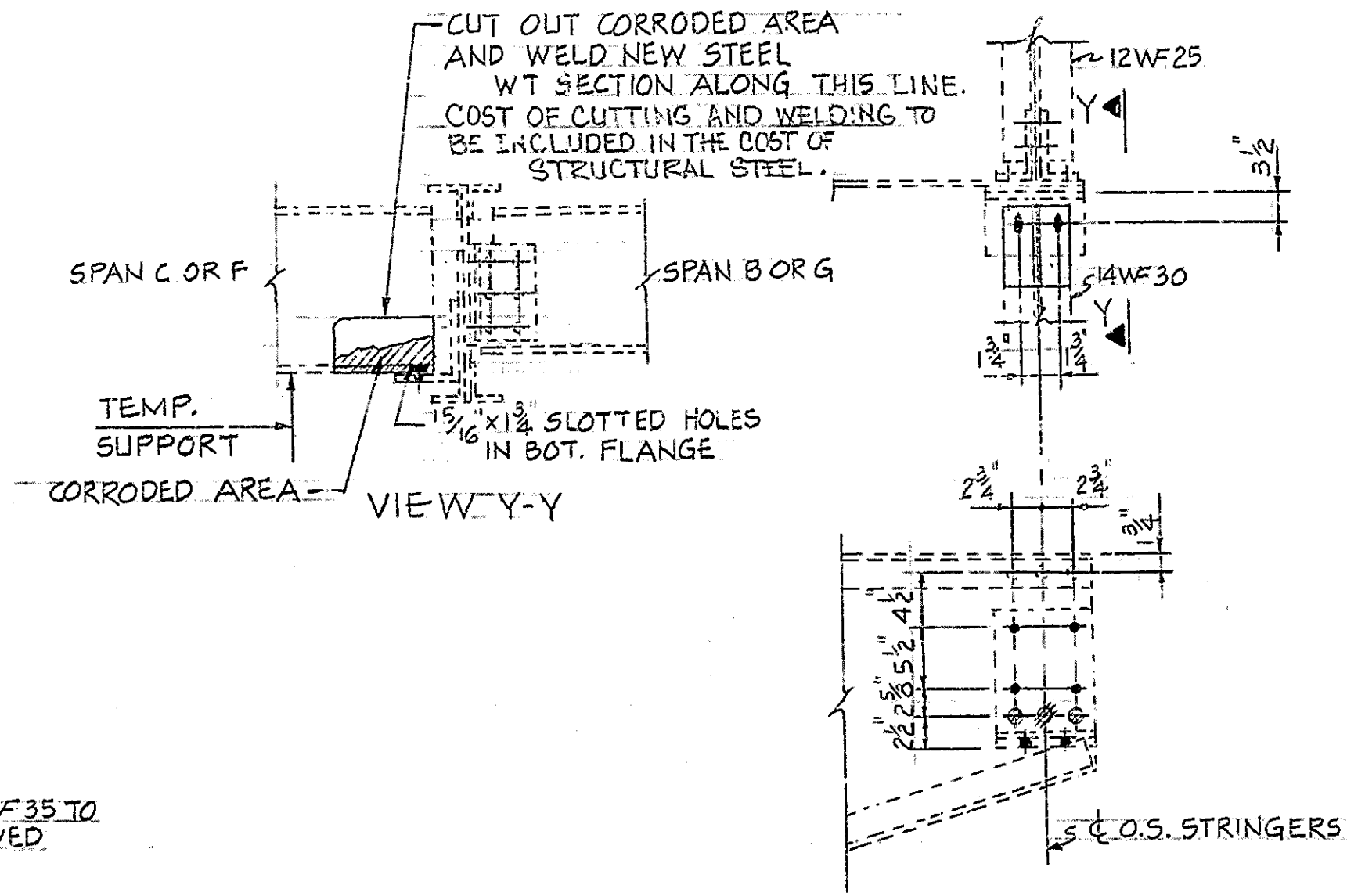
DOWN SPOUT GUIDES
3 REQ'D 90' SPANS
2 REQ'D 150' SPANS



DOWN SPOUT DETAILS
NOTE:
DOWN SPOUTS AND GUIDES TO BE PAID FOR AS "EXTENSION CAST IRON DRAINS". EA.

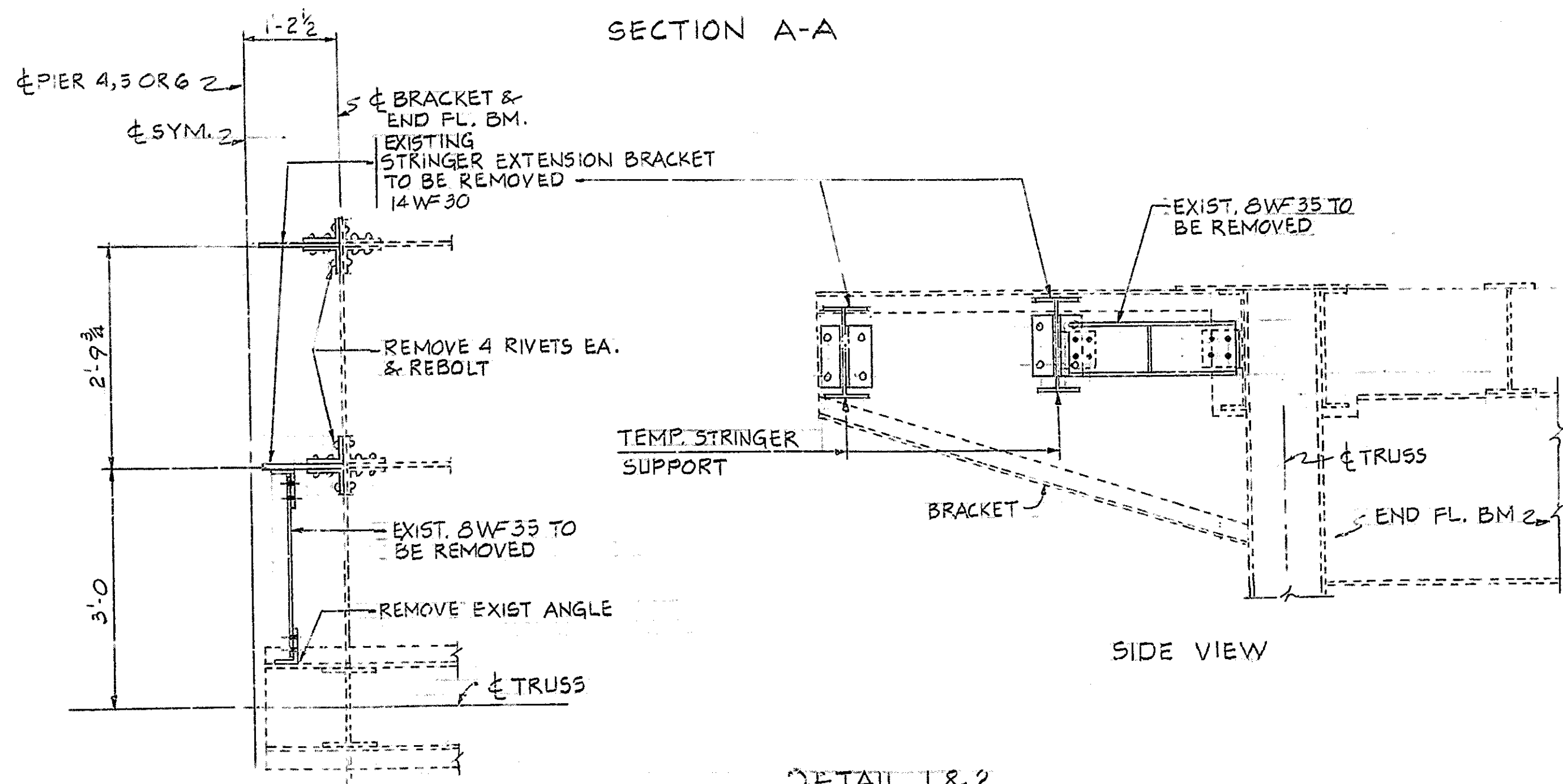


SECTION A-A



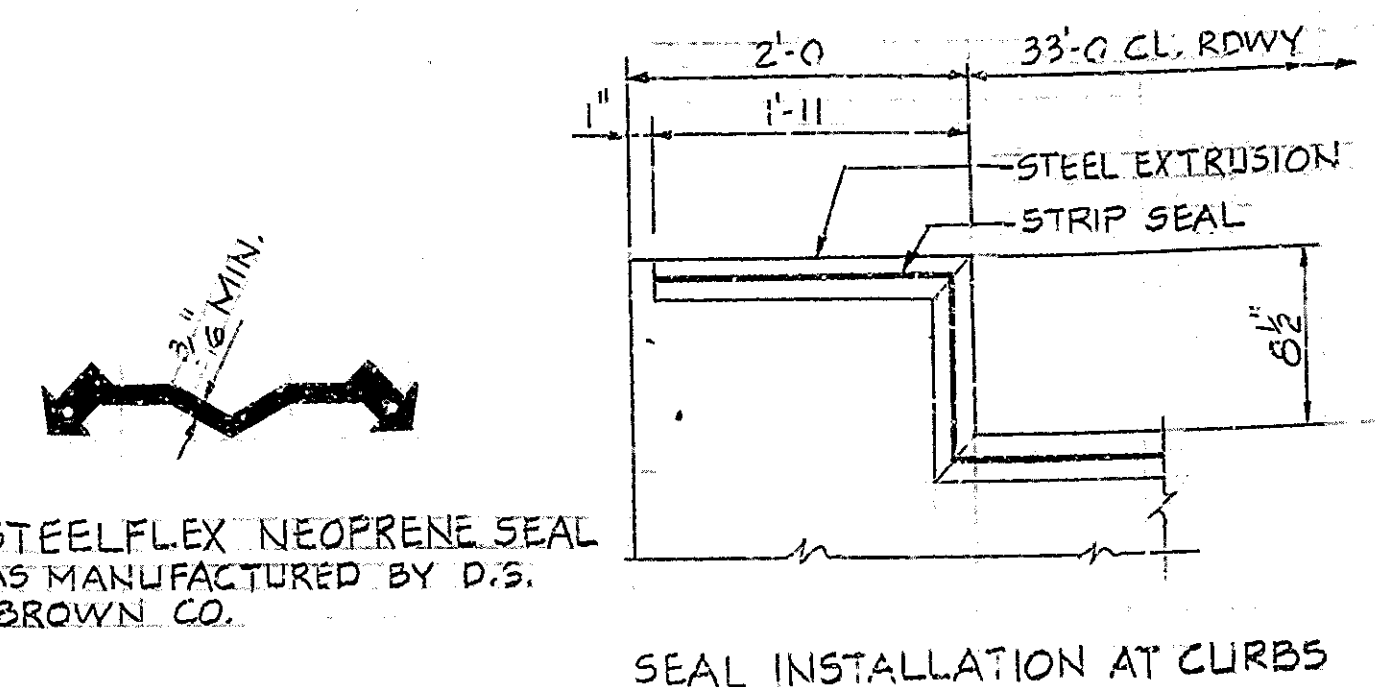
REMOVAL OF RIVETS = 2 EA.

DETAIL "C"
(AT PIER 3 & PIER 7)



PLAN

DETAIL T & 2
SEE DWG. R2 FOR LOCATION



NOTES

SEE THE SPECIAL PROVISIONS FOR PROPERTIES OF MATERIALS.

THE COST OF ELASTOMERIC SEAL ELEMENTS, SEALANTS, ADHESIVE, CEMENT GROUT, AND INSTALLATION OF SEAL SHALL BE INCLUDED IN THE COST OF EXPANSION JOINT "REPLACEMENT SEAL" LFT.

THE SEAL ELEMENT SHALL BE MOULDED AND FURNISHED IN A CONTINUOUS LENGTH EQUAL TO THAT REQUIRED FOR THE JOINT.

ALL FIELD WORK SHALL BE IN ACCORDANCE WITH 71103.

DETAILS
INDIANA DEPARTMENT OF HIGHWAYS

SCALE: NOT TO SCALE DATE: JAN. 16, 1989
SUBMITTED FOR APPROVAL: Richard J. O'Connor
DRAWING: R4 OF R4 SHEET: 5 OF 11
PROJECT: SF-L720 (F)
BRIDGE CONTRACT NO.
BRIDGE FILE: 52-79-1734C (E.B.L.)

DESIGNED: CKD
DRAWN: KS-23-88 CKD, KBK
TRACED: CKD
SF-22317

Rev. 10-6-89 Notes
Rev. 9-07-89; View 4-4

